

A close-up photograph of a green wheat spike, showing the individual grains and the surrounding glumes. The wheat is vibrant green and appears to be in the early stages of growth.

Welcome

To Keva Kaipo Industries Pvt Ltd

*GROWTH
STAGES
OF
WHEAT*

BEFORE SEEDING

FIRST DAY

CHOOSE ANY ONE

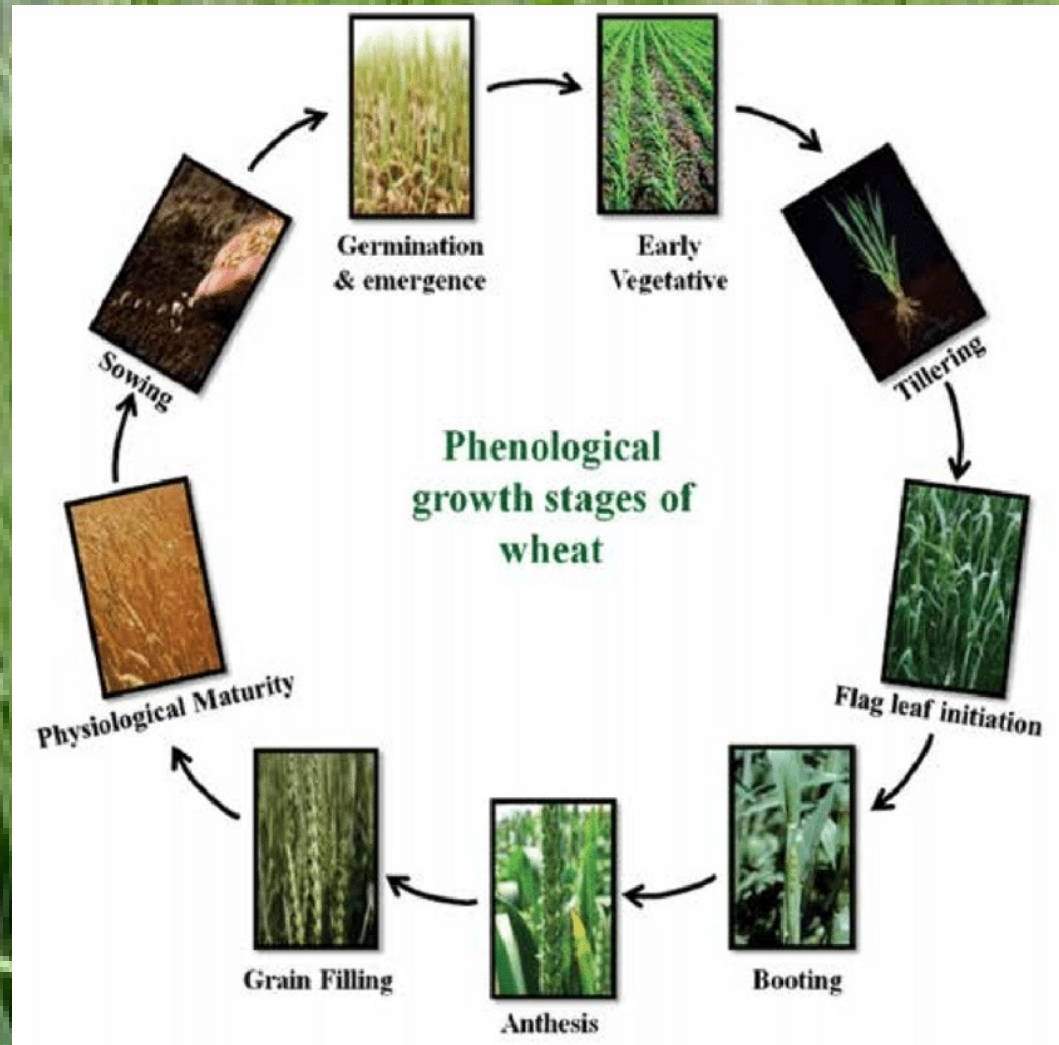


ORGANIC MANURE/AGRO BOOSTER



**MIX WELL WITH SOIL BY TRACTOR AND
SPRAY WITH WATER**

GERMINATION & SEEDLING PROCESS STARTS



NOTE : WAIT TILL TILLERING STAGE

TILLERING STAGE TO HEADING STAGE

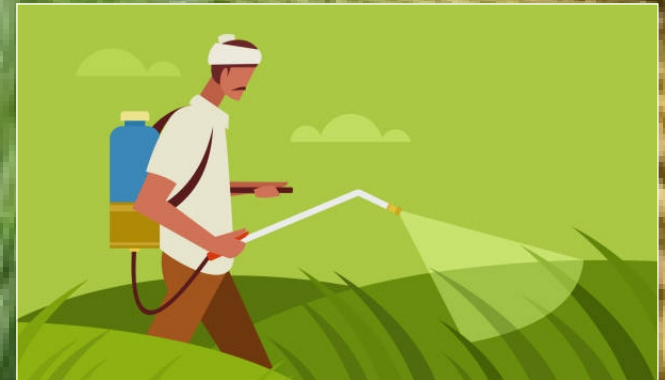
DAY ONE



+



+



**ADD AGRO HUMIC
EXTRACT (30ML)**

**ADD AGRO 80 PLUS
(50ML)**

**MIX WITH 15 LITRE
WATER & SPRAY EVENLY**

TILLERING STAGE TO HEADING STAGE

DAY 20TH



+



+



**ADD AGO CROP CARE
(30ML)**

**ADD AGRO 80 PLUS
(50ML)**

**MIX WITH 15 LITRE
WATER & SPRAY EVENLY**

TILLERING STAGE TO HEADING STAGE

DAY 45TH



+



+



**ADD ORGANIC MICRO
NUTRIENTS (30ML)**

**ADD AGRO 80 PLUS
(50ML)**

**MIX WITH 15 LITRE
WATER & SPRAY EVENLY**

NOTE: REPEAT THE ENTIRE PROCESS TILL FLOWER FORMATION

FLOWERING STAGE TO RIPENING STAGE

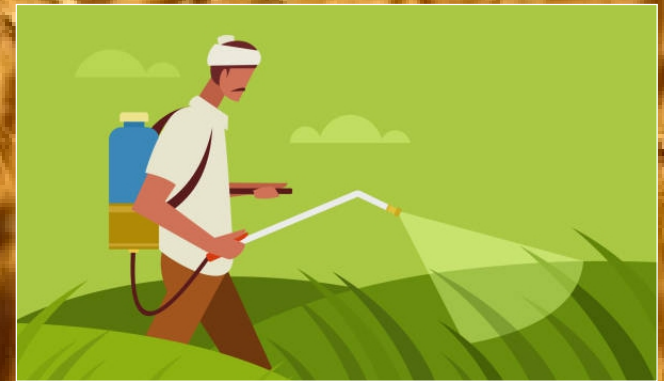
DAY ONE



+



+



**ADD AGRO HUMIC
EXTRACT (30ML)**

**ADD AGRO 80 PLUS
(50ML)**

**MIX WITH 15 LITRE
WATER & SPRAY EVENLY**

FLOWERING STAGE TO RIPENING STAGE

DAY 25TH



+



+



**ADD AGRO FUNGI CARE
(30ML)**

**ADD AGRO 80 PLUS
(50ML)**

**MIX WITH 15 LITRE
WATER & SPRAY EVENLY**

FLOWERING STAGE TO RIPENING STAGE

DAY 45TH



+



+



**ADD ORGANIC MICRO
NUTRIENTS (30ML)**

**ADD AGRO 80 PLUS
(50ML)**

**MIX WITH 15 LITRE
WATER & SPRAY EVENLY**

NOTE: REPEAT THE ENTIRE PROCESS TILL GRAINING & HARVESTING

The background of the image is a dark, deep blue or black, filled with numerous out-of-focus golden-yellow light spots. These spots vary in size and brightness, creating a bokeh effect that resembles distant stars or falling confetti. The overall atmosphere is warm and celebratory.

Thank You